



The Anchor News

Serving the local community in the name of Christ since 1859

6th September 2024

Our Values focus this half term is **Service**



Dear Parents / Carers,

As we settle into a new academic year at St. Clement's, I wanted to welcome you back to school, particularly to the new families that have joined us. I hope the children have enjoyed their return to school and are ready for the fun and challenges that the year will bring.

I know that staff have been working hard over the summer break to ensure we provide the best possible experience for the children.

We welcome our new members of staff, most of whom you know about already and you will get to meet your child's new teacher at our Meet the Teacher evening on **Wednesday 25th September from 3:45pm - 5pm**. This is not an individual session but a basic introduction and preview of what your child will be learning this year. Obviously for those parents with children in more than one class, the session continues until 5pm so you have chance to pop and catch up with any other teachers you need to see.

Once again, we look forward to welcoming you into school this year. If you wish to speak with a specific member of staff at any point, please remember to book an appointment at the main office as staff do not always have time to catch up at end/start of day without prior arrangement.

If you wish to speak to Miss Akers, Mrs Opong, Mrs Nizamis or Myself, it is always wise to book an appointment

Miss Shryane - Head Teacher

New Fence and Gate



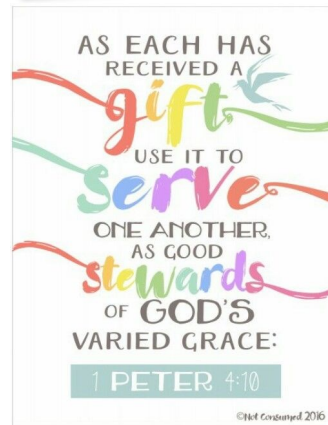
As you will have noticed we now have new fencing and entry gates at the Butlin Street entrance to school. To gain access you need to press the intercom as normal but with the new gates, once the buzzer goes, you will need to push the gate open from Butlin street and pull from inside the grounds. These have been replaced to keep the grounds secure.



New Signage and School Logo



You may also notice some of our new signage around school. These show the BDMAT logo as well as our own updated school logo. We will be informing our uniform suppliers of the updated logo for those of you who wish to purchase uniform.



Acceptable Use of IT form

Please keep a look out as we will be sending out a copy of our Acceptable Use of IT form for all children. These need to be completed and returned before your child is allowed to use IT in school.

Please remember mobile phones are not allowed in school. Once children in Year 6 are given permission to walk home from school alone, they may bring a phone to school and leave it in the main office in the morning to be collected on their way home.

School Lunches...

Today we have sent home a copy of this terms lunches along with guidance on the back to order and pay for your child's food through the School Food United App.



If you have any issues or queries please speak to the school office who will do their best to help. Otherwise you can email SFU directly via their email: Parent@SchoolFoodUnited.com

If you are struggling to access the Food United App to order your child's lunches, there will be a drop in session to support with this.

The session is Monday 9th September, 3:30pm - 3:45pm, in the EYFS Classroom.



St. Clement's
Church of England Primary Academy

Butlin Street, Nechells, Birmingham, B7 5NS
Phone: 0121-464-4652 E-mail: office@stclements.bdm.org.uk
Head Teacher: Miss Shryane Deputy Head Teacher: Mrs Nizamis

[#LearningforLifeAnchoredInChrist](https://www.instagram.com/StClemNechells)



stclements.bdm.org.uk



[facebook.com/StClemNechells](https://www.facebook.com/StClemNechells)



x.com/StClem_Nechells



[instagram.com/stclem_nechells](https://www.instagram.com/stclem_nechells)



Safeguarding: Useful Phone Numbers

Childline
0800 1111

Birmingham and Solihull
Women's Aid
0808 8000 028

Aston and Nechells
Food Bank
0121 359 0801

Free @ Last
0121 327 5959

The P.O.D
0121 681 2173

Report a Child Concern
0121 303 1888

Nechells Neighbourhood
Policing Team
*nechells@west-
midlands.pnn.police.uk*

Report a crime
101

Emergency services
999

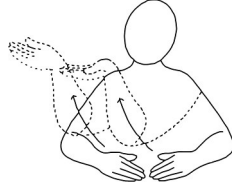
After school clubs
will begin week
commencing
16/9/24



- Don't forget -

It is important to
say the words while
doing the sign.

To link with our Value for the
half term, we have chosen the
below sign to represent Service.



give you all I have

UNICEF
Rights of
the Child



Article 28: Access
to Education

Every child has the right to
an education. Primary
education should be free.
Secondary and higher
education should be
available to every child.
Children should be
encouraged to go to school
to the highest level possible.
Discipline in schools should
respect children's rights and
never use violence.

Class PE Times

Please take note of when your
child has PE and make sure that
they have the correct kit

EYFS	Tuesday AM
Yr. 1	Tuesday PM
Yr. 2	Tuesday PM
Yr. 3	Wednesday AM
Yr. 4	Wednesday AM
Yr. 5	Wednesday PM
Yr. 6	Swimming Tues PM

SCHOOL UNIFORM EXPECTATIONS:

As a reminder our school uniform expectations are as follows:

That all items of clothing and footwear should be labelled with the pupil's name.

Uniform:

- Navy sweatshirt or navy cardigan (with or without the school logo)
- White polo shirt or shirt
- Grey or black trousers
- Grey or black skirt or pinafore (in summer, a blue and white summer dress may be worn)
- Grey, black, or white socks
- Grey or black tights
- Black, sensible shoes (NOT TRAINERS)



* All pupils are required to wear flat, plain black shoes without logos. No trainers. If boots are worn these should also be flat and plain black. Sandals and flip-flops are not permitted.

* Pupils can bring trainers into school to change into for break periods if they wish.

- Navy book bag (with or without the school logo)
- Headscarves: Pupils are free to wear a headscarf if they wish to. These must be navy, grey or black. Headscarves should be of the elasticated type so they do not drape (for safety reasons) and should be plain - no patterns or sequins etc. Headscarves are not to be worn during PE lessons for health & safety reasons.

⇒ **Black jeans or leggings are not permitted in day-to-day uniform.**

PE Kit:

- Plain navy polo shirt
- Plain navy zipped hoody or sweatshirt or normal school jumper
- Plain navy, black, or grey tracksuit bottoms or leggings
- Plain navy, black, grey shorts (in summer)
- Plain, suitable trainers or black pumps



⇒ **No football attire will be allowed.**

Jewellery

For health and safety reasons, we do not allow children to wear jewellery except a small pair of stud earrings and a small watch (not smart watches). The exception to this rule are small objects of religious significance. All hair accessories should be plain and either grey, navy, white or black. Hair that may impede vision needs to be tied back from the face. Make up and nail varnish cannot be worn to school unless for an out of school hours function, for example a school disco.

We have some items of uniform available for purchase from the school office or you can ask for our local uniform supplier.



BDMAT
Birmingham Diocesan
Multi-Academy Trust



The Birmingham Diocesan Multi-Academy Trust is a company limited by guarantee and is registered in England and Wales: Company No 10729883. The registered office is Birmingham Diocesan Multi-Academy Trust, BDMAT Central Office, Christ Church, Church Of England Secondary Academy, Daleview Road, Yardley Wood, Birmingham, B14 4HN