

Ward End Fire Station OPEN DAY

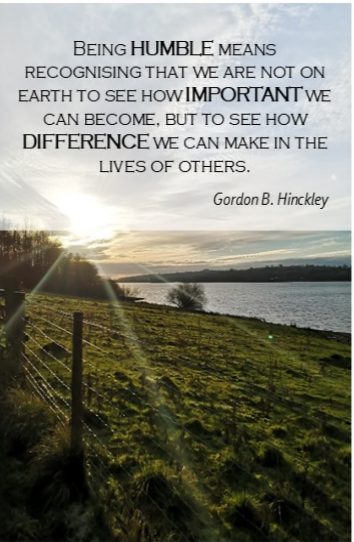
22nd June 2025 11 am – 3 pm
Come and join in the fun!

Cakes Friends Groups Fun Face Painting & DJ Games & Demo's Rides VR headsets

Refreshments Stalls Fun activities Safety advice Community stands

Come and meet your local firefighters and see our fire engines!

Ward End Fire Station, Washwood Heath Road, B8 2HF
www.wmfs.net @WestMidFire



BEING HUMBLE MEANS
RECOGNISING THAT WE ARE NOT ON
EARTH TO SEE HOW IMPORTANT WE
CAN BECOME, BUT TO SEE HOW
DIFFERENCE WE CAN MAKE IN THE
LIVES OF OTHERS.
Gordon B. Hinckley

Attendance & Punctuality		
	Attendance	Punctuality
Rec	100%	6
Yr. 1	100%	6
Yr. 2	95%	1
Yr. 3	100%	3
Yr. 4	97%	4
Yr. 5	95%	2
Yr. 6	100%	8

COME To the
SUPER AMAZING
BOOK FAIR!

Thurs 15th May
- Tues 20th May

8:30am - 9am
and
3:30pm - 4pm

Star Pupils

Jana and Shayan

Maryam and Yunus

Elijah and Maria

Hussein and Adelin

Ethan and Mozan

Anaiyah and Aaban

Ibrahim and Mariam

Lunchtime Star

Safa (Yr. 4)

Kit List

☐ Waterproof jacket

☐ Swimming costume/ shorts

☐ Outdoor shoes x2

☐ Towel

☐ Old warm clothing as there is a strong chance of them getting muddy! (Two sets of clothing).

WOODLANDS ADVENTURE

Next half term KS2 will be heading off to Woodlands, and while they are out for the day they will take part in a variety of activities.

We have listed the different items they will need to bring to give you plenty of time to get prepared.

The Anchor News

Serving the local community in the name of Christ since 1859

9th May 2025

This half term our Value focus is Humility

Hi everyone,

My name is Miss Khatun, and I'm a SEN Assistant here at St. Clement's. In the mornings, I work alongside the Year 5 class teacher to support learning in our core subjects. In the afternoons, I lead catch-up interventions across Key Stage 2, supporting a range of children - including those with SEND and EAL - in working towards their personalised targets. I also work closely with our SENCo as part of the school's SEN team, helping to ensure that our most vulnerable children receive the right support.

I've been part of the St. Clement's community since 2013 and love the strong sense of togetherness shared by the school, children, and families. That connection inspired me to become a staff governor in 2014.

This week, we've been doing lots of exciting work around VE Day, including some fantastic art activities inspired by Henry Moore, which Year 5 really enjoyed.

Next week, our Year 6 pupils will be sitting their SATs. They've been working incredibly hard, and I'd like to wish them all the very best - we're so proud of them!

Miss Khatun - SEN Assistant

Important Upcoming Dates		
May	12th	Start of KS2 SATs week
	15th	First Day of Book Fair
	20th	Last Day of Book Fair
Half Term Break (26th - 30th May)		
June	2nd	First Day Back - Normal Time
		Year 4 Multiplication Tables Check (over 2 wks)
	9th	Phonics Check Week starts
	12th	Year 4 Class Assembly
	16th	Start of KS1 SATs week
		Year 3 Woodlands
	17th	Year 4 Woodlands
	19th	Year 6 Woodlands
		Year 3 Class Assembly
	23rd	Year 5 Woodlands
July	24th	Class Photo Day
	26th	Year 6 Church Leavers Service
		Year 2 Class Assembly
	1st	Reception Class Assembly
	3rd	Year 1 Class Assembly
	4th	Career's Day
	10th	Year 5 Class Assembly
	11th	Decades Day
	14th	Shining Star Assembly
	16th	Parents Evening (3:45pm - 6pm)
		Year 6 Graduation and Production
	17th	End of Year Concert (AM)
		Summer Disco's EYFS/KS1 (3-4pm) KS2 (4-6pm)

38

Article 38: Protection in war

Children have the right to be protected during war. No child under 15 can join the army or take part in war.

Attention Year 5 Parents

West Midlands Grammar Schools

Entrance Test Registration is now open

Registration is now open for parents of current Year 5 pupils who would like their child to sit the entrance test for a place at any of the grammar schools in Birmingham/West Midlands (entry to Year 7 in September 2026).

Registration can be made online by visiting the website below, and the test will take place on 13th September 2025. The closing date for registering is 4pm on 27th June 2025.

www.westmidlandsgrammarschools.co.uk

KS2 SATs next week...

Year 6 SATs Breakfast Club

Monday 12th May - Thursday 15th May

Year 6 are invited to come to school at 8.30 for breakfast club. We will be providing toast & jam and orange juice/squash. This time spent socializing with their peers, or chatting with their teacher helps children relax prior to taking their tests.

All tests will take place in the morning so it is imperative that children attend everyday and are on time as we cannot delay papers to wait for children.

Date	Activity
Mon 12th	Grammar Paper 1 45 min
	Spelling Paper 2 20 min
Tues 13th	Reading 60 min
Wed 14th	Maths Paper 1 Arithmetic 30 min
	Maths Paper 2 Reasoning 40 min
Thurs 15th	Maths Paper 3 - Reasoning 40 min
Fri 16th	School will be as usual



VE Day

v s t r e e t p a r t y
a l i b e r a t i o n f
z r e m e m b r a n c e
t t t w h l k j n p x f
g c f e s t i v a l r p
l u a o h v i c t o r y
s u r r e n d e r x f x
r b i t t e r s w e e t
h u u e u r o p e f t g
n q h i u o a r w o x v
c e l e b r a t e g n l
h n g e r m a n y y i x



Children in Reception have been learning about the life cycle of chicks. They observed eggs being kept warm in an incubator and watched with excitement as the chicks began to hatch.

Over time, they saw how the chicks changed and grew, learning about the different stages of development from egg to fluffy chick.

The children loved holding the chicks gently, helping to feed them, and took great care in looking after them. This experience helped them understand the concept of life cycles, the needs of living things, and encouraged empathy and responsibility.



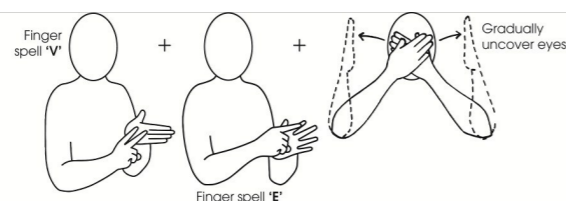
Charity Spotlight



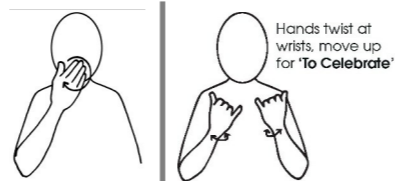
The story of the RNLI is one of courage and dedication. Across its 200-year history, RNLI lifesavers have answered the call to rescue. Day or night. On calm seas or into ferocious storms. If someone is in peril at sea, the RNLI will do all we can to save them. Since its first lifeboat in 1824, the RNLI has saved more than 146,000 lives at sea.
www.rnli.org/



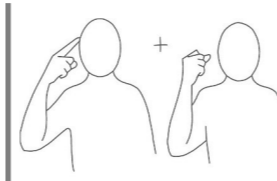
Don't forget it is important to say the words as you sign them.



VE Day



In school we celebrated



and remembered



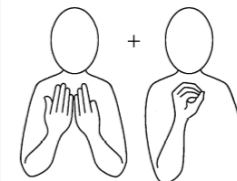
together, the



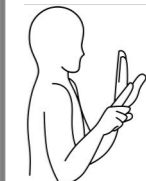
past, the



future and



80



years since



victory.



Safeguarding: Safety

- * Find the safest place to cross and then STOP.
- * Stand on the pavement near the kerb.
- * Look all around for traffic and listen.
- * If traffic is coming, let it pass.
- * When it's safe, walk straight across the road. (DON'T RUN)
- * Keep looking and listening until you safely reach the other side.
- * Where you can use crossings to keep safe.

Water Safety

- * On a hot day, it might seem like a great idea to cool down in open water. However, swimming is prohibited in our canals and rivers. There are too many risks that you can't see hidden below the surface, and lots of other ways you can cool down with two feet on the towpath.
- * It's really tempting to dip more than your toes in the sparkling waters but be warned. Canal, river and reservoir water will still be really cold, even in the summer. It can take your breath away making it difficult to swim. Sadly, of the 400 people who drown in the UK every year, more than half of these happen at inland waters such as canals, rivers, lakes, quarries and reservoirs.

Rail Safety

- * Only cross railroad tracks at a designated crossing. Designated crossings are marked by a sign, lights or a gate.
- * Look both ways before crossing railroad tracks. Remember, trains can come from either direction at any time.
- * If lights are flashing, alarm is sounding or the gate is down at a railroad crossing, wait for the train to pass completely, the gates to lift and the lights to stop flashing/alarm sounding before crossing. It is never okay to rush across and try to beat the train. Trains may be closer and faster than you think.
- * If you are using a mobile phone, headphones or playing a game on a device, remember Heads Up, Devices Down when you cross the tracks. Once a train starts to brake, it can take a mile for the train to stop. So, when you see a train, it's already too late for it to stop for you. Headphones should be removed, so you can hear an approaching train.
- * Don't be tempted to walk along the railroad track. It might be a shortcut, but it is dangerous and not worth the risk. It is also against the law to walk on the track and the land around it because it is private property.
- * Train Stations are not a place to play.