

PHOTO DAY



IS COMING
Monday 24th November

Sibling/Family/Nursery photos:
8am - 8:45am

Please note: No sibling photos will be taken after 8.45am

Individual: 9am onwards

Photo Day is fast approaching!

On the day we will have a special morning session for those that want a sibling, family or nursery child photo taken. To attend this session, please book at the office by Thursday (20th).

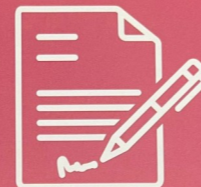
Parent Link - You can Pre-Register NOW!

This year our photo company have introduced Parent Link, allowing you to get instant access to your child's photos when they're ready - no codes needed.

To pre-register, please visit:
<https://aperture-online.flexschools.co.uk/register/j4ZGLdWZ4c>

Paperwork & Peace!

Need help with forms, benefits, debt letters, council tax, rent arrears, visa applications... or just don't know where to start?



We are here to help!

FREE DROP-IN SUPPORT SERVICE EVERY WEDNESDAY

10:00 – 12:00

BLOOMSBURY HOPE CENTRE
BLOOMSBURY STREET
NECHELLS
B7 5BX



A Project of Nechells and Overseas Care Fund
Charity Number: 1043061

NEED HELP? WE ARE HERE FOR YOU!

ARE YOU FEELING STRESSED, LONELY OR FACING RELATIONSHIP PROBLEMS?

ARE YOU HAVING PROBLEMS WITH FOOD, MONEY OR GETTING AROUND?

WOULD YOU LIKE TO DISCOVER NEW OPPORTUNITIES AND RECEIVE SUPPORT OR GUIDANCE IN YOUR LIFE?



hello@reachoutcp.co.uk
07858 508 267

A PROJECT OF NECHELLS AND OVERSEAS CARE FUND
CHARITY NUMBER: 1043061

Charity Spotlight



Birmingham Mind

We are made up of three parts that work together - national Mind, local Minds, and Mind shops.

Together, we are a strong and caring community, standing up for better mental health for everyone.

Local Minds

Local Minds are independent charities that help people with their mental health across England and Wales.

Each local Mind offers different services, based on what local people need. This can include things like counselling and support from others with similar experiences.

Mind's shops

Our shops help us raise funds for our work. Are you looking for pre-loved clothes, books and unique pieces? You might find them at one of our charity shops on the high street. And if you're looking for gift ideas, wedding stationery, or wellbeing subscription boxes, you'll find them on our online shop.

Support what we do

We couldn't do anything without support from incredible people like you. With your help, we can make more noise in the fight for better mental health and be there for more people who need us.

Here are some of the ways you can get involved:

- * **Fundraise** - organise your own fundraising event or support Mind as part of a challenge event (like a marathon)
- * **Donate** - give once or donate regularly. You can also leave a gift in your will or donate in memory of a loved one
- * **Volunteer** - become a volunteer in one of our many retail shops across England and Wales

Become a corporate partner - we're always on the lookout for businesses who are keen to play a role in raising money or campaigning for mental health.

www.mind.org.uk

Hope is the only thing stronger than fear.

We look forward to seeing you



Mondays and Thursdays: 3:30pm-4pm

Don't forget our community library is open on Mondays and Thursdays, 3.30pm – 4pm.

There is a range of adult and children's books and the opportunity to sit and complete homework.

Encouraging reading and reading together is a great way to spend time together and support your children and their development.

Applying for your child's place in Reception - Sept 2026

Children in Birmingham can start school (Reception) in the September after their 4th birthday.

If your child currently attends our nursery this **does not give them automatic priority for a place in our Reception class.**

You need to apply for your child's place online at:

eadmissions.birmingham.gov.uk

The deadline is 11:59pm on Thursday 15 January 2026.

If you miss this deadline you may be offered a school place anywhere in Birmingham. Please make sure you complete the online form and if you need any help please ask us and we will do our best to support you.

Safeguarding: What is Mental Health?



Mental health is a state of emotional, psychological, and social well-being that affects how you think, feel, and act. It influences how you handle stress, relate to others, and make choices, and is just as important to care for as physical health. Mental health exists on a spectrum and can range from good to poor, and it can change over time due to various factors.

- * **Emotional, psychological, and social well-being:** It includes your ability to cope with life's challenges, be resilient, and have meaningful relationships.
- * **Impact on daily life:** Good mental health allows you to function well, enjoy life, and have a sense of purpose. Poor mental health can make it difficult to cope, leading to issues like withdrawing from others or losing interest in activities.
- * **Dynamic and changeable:** Just like physical health, your mental health can fluctuate. It can be affected by life events, stress, and a combination of biological, psychological, and environmental factors.
- * **More than the absence of illness:** Mental health is not just the absence of mental illness; it is a positive and integral part of overall health.
- * **Importance of care:** Looking after your mental health is crucial for development, resilience, and overall well-being. It's important to take steps to support it, just as you would your physical health.



Attendance & Punctuality

	Rec.	Yr. 1	Yr. 2	Yr. 3	Yr. 4	Yr. 5	Yr. 6
At.	100%	100%	100%	93%	98%	95%	97%
Pu.	9	5	0	9	6	6	7

Health and Social Care Qualification We have the opportunity to offer Level 1-3 in Health and Social Care with Eagles Consultancy. If you are interested in this course, then please give your name to the school office.

This can also be accessed by people in the community of Nechells, who do not have children at the school.



UNICEF Rights of the Child Article 3: Best interests of the child



When adults make decisions, they should think about how their decisions will affect children. All adults should do what is best for children. Governments should make sure children are protected and looked after by their parents, or by other people when this is needed. Governments should make sure that people and places responsible for looking after children are doing a good job.

Are you ready for Christmas

Take a look below at some of our upcoming events this December. More information will be sent home in the following weeks



Christmas Lunches: Adults £5 / Children £3
Tues 9th (Y4-Y6) / Wed 10th (EYFS-Y3)



The Christmas Discos will be held on **Thursday 11th December.**

There will be a refreshment stall where snacks, drinks and sweets can be purchased. Please make sure your child has money on the day. The disco is open to children from Reception - Year 6. **Tickets will be £2 and can be purchased from the school office soon.**

3pm-4pm Rec. & KS1

Children will start the disco during school time and be ready to be picked up at 4pm. (children to bring clothes to change into at school)

Children not attending the disco to be picked up at 3:30pm as usual.

4:30pm-6pm KS2 (Y3,4,5,6)

Children will go home at 3:30pm as usual and then return to school for 4:30pm

CHRISTMAS JUMPER DAY



Friday 12th December we will be celebrating Christmas Jumper Day.

We want to see your Christmas Jumpers, if you can, to help raise money for Save the Children.

Please send £1 if your child is in Christmas clothes, £2 if in non-uniform.

No donation required if children wear their uniform.

Parent Christmas Workshops

We are excited about our parent workshops that are coming up in December. More information will be sent home closer to the time, but for now you can mark your calendars!

Monday 15th
Y5+Y6 (PM)

Tuesday 16th
KSI (AM)

Thursday 18th
Y3+Y4 (PM)



Christmas Concert
Thurs 18th (AM)



Christmas Grotto - Fri 12th December

Children have the chance to attend the Christmas Grotto. They will meet Mrs Claus and get a personalised gift. They will spend time talking to Mrs Claus and sharing all the good things they have done this year. Nur - Y3

More information and ticket details coming soon.

Christmas Lunch

MAINS
Roast Turkey or Root en Croute (Vegetable Tart)

SIDES
Roast Potatoes, Stuffing, Carrots, Peas and Gravy

DESSERTS
Vanilla Christmas Shortbread

*Menu may be subject to change

Chartwells

Nativity

Wednesday 17th December
Mark the date - we look forward to seeing you for our lower school Nativity



The Anchor News

Serving the local community in the name of Christ since 1859

14th November 2025

Hello everyone! It's been wonderful to see how quickly the children have settled into their new classroom - they've already made it feel like home. I'm really proud of how confident and happy they are as we start this term together.

On Tuesday, Year 6 led our Remembrance Day assembly with such compassion and thoughtfulness. It was a special moment for the whole school community, and I know the younger children learned a lot from their example.

We've got a busy and exciting few weeks ahead as we build up to the Christmas festivities - I can't wait to share all the fun with the children!

Just a couple of reminders to help things run smoothly:

- Please make sure reading books come to school every day so we can keep up with our reading routines.
- And with the chilly, wet weather setting in, every child will need a warm, waterproof coat for outdoor play and learning.

Thank you for your support - it really makes a difference. Here's to a fantastic term ahead!

Mr Bond - Class Teacher

Our Values focus this half term is **Hope**



This Week...

Nov	Thurs 20th	Year 4 Class Assembly
	Fri 21st	Children in Need

SHOW YOUR SPOTS
Let's raise lots!



Friday 21st Nov, we will be fundraising for Children in Need

Next week we will be fundraising for Children in Need and we want everyone to wear something spotty to help raise money for this cause. **Please send £1 if your child is in spotty clothes, £2 if in non-uniform. No donation required if children wear their uniform.**

Star Pupils

Ayub Anwar

Abubacarr and Naomi

Jayden and Yunus

Humza and Chidinma

Ariya and Mariam

Ethan and Maryam

Shayla and Jenson

Lunchtime Star

Solyana (Rec.)

Upcoming...

Nov	Mon 24th	School Photo Day (Individual Photos)
	Thurs 27th	Year 3 Class Assembly
Dec	Wed 3rd	Y6 SATs Parent Workshop
	Tues 9th	Christmas Lunch (Y4-Y6)
	Wed 10th	Christmas Lunch (Nur-Y3)
	Thurs 11th	Year 2 Class Assembly
		Community Christmas Christmas Discos
	Fri 12th	Christmas Jumper Day
		Christmas Grotto
	Mon 15th	Shining Stars Assembly (AM)
		Parent Christmas Workshop: Y5+Y6 (PM)
	Tues 16th	Parent Christmas Workshop: KSI (AM)
Wed 17th	Nativity (AM)	
Thurs 18th	Christmas Concert (AM)	
	Parent Christmas Workshop: Y3+Y4 (PM)	
Fri 19th	Prayer Morning	
	LAST DAY OF TERM	

First Day Back: Monday 5th January 2026



Don't forget it is important to say the words as you sign them. We have made the words that you sign bold in the sentence below.



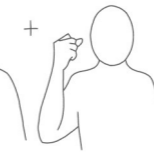
The **weather**



is **cold,**



remember



to wear a



Mime putting coat on over shoulders, show appropriate length

coat.



Birmingham Diocesan Multi-Academy Trust • Company Number 10729883 • enquires@bdmatschools.com • www.bdmatschools.com



Butlin Street, Nechells, Birmingham. B7 5NS
Phone: 0121-464-4652 E-mail: office@stclements.bdmatschools.com
Head Teacher: Miss Shryane Deputy Head Teacher: Mrs Nizamis

#LearningforLifeAnchoredInChrist



stclements.bdmatschools.com



facebook.com/StClemNechells



x.com/StClem_Nechells



instagram.com/stclem_nechells