



# The Anchor News

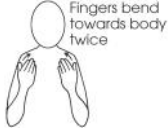
Serving the local community in the name of Christ since 1859

17th April 2026

Our Value focus this half term is **Humility**



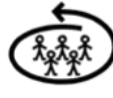
**Welcome**



Fingers bend towards body twice



**Back**



**Everyone**



It has been lovely to welcome all our pupils and their families back to school after what I hope was a pleasant Easter break. I would also like to welcome our two new assistant headteachers - Mrs Wagenfuehrer (top) and Mrs Kamali (bottom). They are on the front door or back gate every morning over the next few weeks to say hello to everyone and get to know you all so please do say hello when you see them.



I'm looking forward to a term full of hard work and exciting topics, we have decades day this term, which always goes down well and Climate week. I know year 6 will be working hard towards their SATs which begin on May 11th so let's keep that attendance high over these next few weeks.

Enjoy your weekend.

Miss Shryane - Head Teacher

## Important Upcoming Dates...

|  |  |
|--|--|
| Mon 4th May                                      | Bank Holiday - SCHOOL CLOSED   |
| Week Commencing Mon 11th May                     | Yr 6 SATs Week   |
| Fri 15th May                                     | Decades Day<br><i>(see next page for more information)</i>   |
| Week Commencing Mon 18th May                     | Scholastic Book Fair Starts<br>Climate Week <i>(assorted parent workshops)</i><br><i>more information soon</i> |
| Thurs 21st May                                   | Scholastic Book Fair Ends  |
| Fri 22nd May                                     | Climate Week Assembly - Parents Welcome<br>Last Day of Term  |
| <b>May Half Term</b> Mon 25th May - Fri 29th May |  |
| Mon 1st June                                     | First Day Back (Normal Time)   |

**Look what arrived this week!**

We have copies of the Spring Picks leaflet in the school office if you are interested in ordering any more books



**We hope you all enjoy your new books**

Thank you everyone for your purchases. They raised an amazing £80 to buy books for the school!

In partnership with 

Pride leads to disgrace,  
but with humility comes wisdom.

Proverbs 11:2



Don't forget our library is open  
Monday and Thursday 3:30pm - 4pm

Follow Us on **Social Media** for exciting and important updates



**St. Clement's**  
Church of England Primary Academy

Butlin Street, Nechells, Birmingham, B7 5NS  
Phone: 0121-464-4652 E-mail: office@stclements.bdmatt.org.uk  
Head Teacher: Miss Shryane Assistant Head Teacher: Mrs Kamali  
Assistant Head Teacher: Mrs Wagenfuehrer



[stclements.bdmatt.org.uk](http://stclements.bdmatt.org.uk)



[facebook.com/StClemNechells](https://facebook.com/StClemNechells)



[x.com/StClem\\_Nechells](https://x.com/StClem_Nechells)



[instagram.com/stclem\\_nechells](https://instagram.com/stclem_nechells)

**#LearningforLifeAnchoredInChrist**

## Safeguarding: Following instructions in school



We want to remind you of the importance of following instructions in school. In assemblies, families are asked not to take pictures and/or videos due to protecting the identity and location of others. Some ignore this instruction and put the safety of other families at risk. This cannot happen. If you want a photo of your child, then ask a staff member who will arrange for this to happen during the assembly or after.

## Communication and Autism Team

### Parent Carer Workshops - St George's Primary School

We would like to invite you to a CAT Parent carer workshop for parent carers who would like to increase their understanding of autism and ways to support their child.

Workshops will be held over six weeks with the following themes:

- 23<sup>rd</sup> April 9.15-10.45am - *An overview of Autism*
- 30<sup>th</sup> April 9.15-10.45am - *Language and Communication*
- 7<sup>th</sup> May 9.15-10.45am - *Emotional Regulation*
- 14<sup>th</sup> May 9.15-10.45am - *Sensory Differences*
- 21<sup>st</sup> May 9.15-10.45am - *Sleep Routine*
- 4<sup>th</sup> June 9.15-10.45am - *Developing independence with toileting*

Sessions will take place at:  
St George's Primary School, B19 3QY



# ROCK STEADY

## Would your child like to play in their own rock band in school?

If you would like Rocksteady to come to our school, please register your interest in lessons by completing the online interest form:

<https://form.jotform.com/RocksteadyMusic/st-clements-CofE-ParentInterestForm>

More information can be found at the end of the newsletter



Signs of Makaton the week



paint

Top: Symbol  
Bottom: How to sign



## UNICEF Rights of the Child



Article 11:  
Protection from kidnapping

Governments must stop children being taken out of the country when this is against the law - for example, being kidnapped by someone or held abroad by a parent when the other parent does not agree.

# Decades Day

is coming: FRIDAY 15th May

Your child's class will be learning all about Britain during a specific era (see below). If your child wishes to dress up for the era, they are welcome to do so. Have a look at some pictures to see what the fashion was like in these days. They are usually easy to re-create.

If children decide not to wear an outfit from their era, they should wear school uniform.

EYFS: 90s, Yr. 1+2: 80s, Yr. 3: 50s, Yr. 4: 60s, Yr. 5: 30/40s, Yr. 6: 70s



## New Lunch Menus

Please take note of our new lunch menus that started this week. They were emailed out with the newsletter before half term and they can also be found on the school website at: [stclements.bdmats.org.uk/school-dining/](http://stclements.bdmats.org.uk/school-dining/)



## Attendance & Punctuality



|     | Rec. | Yr. 1 | Yr. 2 | Yr. 3 | Yr. 4 | Yr. 5 | Yr. 6 |
|-----|------|-------|-------|-------|-------|-------|-------|
| At. | 92%  | 96%   | 90%   | 91%   | 99%   | 96%   | 92%   |
| Pu. | 1    | 6     | 4     | 9     | 4     | 2     | 5     |



## URGENT WARNING FOR PARENTS



Please be extremely cautious with the new “dumplin” toy trend. There are growing concerns that some of these toys, especially unregulated or fake versions may be causing serious allergic reactions in children, including anaphylaxis. Many of these counterfeit versions are not safety approved. Below is more information about safety labels and regulations to help you identify genuine products.

*If your child shows any signs of an allergic reaction, seek medical help immediately.*

## Safety Labels & Regulations

In the UK there are rules and regulations to try and make sure that the toys we buy for children are safe.

When buying toys look for safety labels. There are some approved labels that show the toy meets the quality and safety standards recommended to keep children safe.



CE Mark

The CE mark means that the toy meets all the rules for toy safety set across Europe.



The UKCA Mark

The UKCA (UK Conformity Assessed) mark is a product marking that shows a product placed on the market in Great Britain (England, Scotland, and Wales) conforms to UK regulations.



The Lion Mark

The Lion Mark shows the toy has been made by a quality approved British toy maker. This is a voluntary mark so won't be on all toys.



Age Warning

This age warning acts as a guide to whether a toy is safe or not for an age group. Parents and carers should think about the needs of their own child, as children develop at different rates.



Kitemark

The Kitemark shows a British product has met quality and safety levels. This is not just used for toys but is found on things like safety equipment e.g. a cycle helmet. This is a voluntary mark so won't be on all toys.

There must also be a manufacturer or importer address on the label for products sold in the UK. This address must be for the UK-based business that is legally responsible for the product information on the label. For imported goods, this is the UK importer's address, and it cannot be an email or phone number.



# WOULD YOUR CHILD LIKE TO PLAY IN THEIR OWN ROCK BAND AT SCHOOL?

# ROCK STEADY

Hi Parent or Guardian,

**Would you be interested in fun and inclusive band lessons coming to your school?**

With Rocksteady Music School, children learn to play an instrument through weekly rock and pop band lessons. It's the perfect way to master new musical skills, make friends and have fun – all at school! Rocksteady lessons are also shown to boost confidence, wellbeing, social skills and even academic achievement.

Your child will learn to play songs instantly through listening and playing. There's no music theory involved, and lessons are designed to be fun, inclusive and accessible. They will be making progress in every lesson and can also achieve an Ofqual-regulated music qualification, accredited by Trinity College London, without having to take a single exam!

**Here's what else you need to know:**

- Most lessons take place during the school day. There's **no experience necessary** and **all instruments for lessons are provided**.
- You can choose if they shine on **vocals, keyboard, drums, guitar or bass**.
- Proudly watch as your child performs in their **end of term concerts**, showing just how far they have come!
- Rocksteady band leaders are professional musicians who inspire a passion for music and support your child every step of the way.

Lessons are £44.68 per month with nothing to pay in August. There's a **money-back guarantee** for the first month and you can **cancel at any time**. Places are offered on a first come, first served basis.

**If you would like Rocksteady to come to your school, please register your interest in lessons by completing this form today:** <https://form.jotform.com/RocksteadyMusic/st-clements-CofE-ParentInterestForm>

Best wishes,

Rachel Hawker | Director of Education



**0330 113 0330**  
(Mon-Thurs 8am-8pm, Fri 8am-6pm, local rate)  
[rocksteadymusicschool.com](http://rocksteadymusicschool.com)

**Find out what parents  
say about Rocksteady** →

**98%**  
**OF PARENTS SAY  
THEIR CHILD LOVES OR  
ENJOYS ROCKSTEADY  
BAND LESSONS**

\*Parent Survey 2024

**94%**  
**OF PARENTS SAY  
ROCKSTEADY  
IMPROVES THEIR  
CHILD'S CONFIDENCE**

\*Parent Survey 2024

*My daughter loves her Rocksteady lessons. She has fun, learns new skills and builds her friendships during school time.*

**Sade**

*I love the exam-free qualifications, as the focus is my child's enjoyment of music and learning without the pressure of an exam.*

**Juliet**

*The concerts are a brilliant opportunity for the children to develop their music skills and increase their confidence together.*

**Grace**

*Rocksteady has given my child the confidence to perform in front of his whole school.*

**Michelle**

*Our child looks forward to every lesson. Watching him and the whole band was an honour – it's amazing to see their progress and teamwork!*

**Stanislava**

*My children eagerly anticipate their lessons and come home excited to share what they've learned. It's wonderful to see!*

**Emm**

**0330 113 0330**  
(Mon-Thurs 8am-8pm, Fri 8am-6pm, local rate)  
**rocksteadymusicschool.com**

**TRINITY**  
COLLEGE LONDON  
Validated Course and  
Assessment Provider 619250



Rocksteady Music School Ltd. Registered in England No. 08111026