



The Anchor News

Serving the local community in the name of Christ since 1859

19th June 2026

Our value focuses this half term are **Dignity** and **Justice**

My time at St. Clement's this term has been incredibly enjoyable and rewarding. It has been a fantastic start to the summer term, and I have loved every moment of teaching and supporting the children.

Year 1 and Year 2 have been absolutely amazing. They have worked extremely hard preparing for their phonics screening and end of year tests and have shown determination, resilience, and a positive attitude throughout. I have been so proud to see the progress they have made and the confidence they have developed. It has been a pleasure to teach such a hardworking and enthusiastic group of children.

One of the highlights of the term was taking part in our assembly. The children put in so much effort and did a wonderful job. It was lovely to see them perform with confidence and enjoy sharing their learning with others.



Another memorable experience was our trip to the Nature Centre. We had a fantastic day exploring and discovering new things together. We saw lots of different animals and learnt interesting facts about them and their habitats. The children were engaged, curious, and excited throughout the visit, making it a really enjoyable experience for everyone.

Overall, this term has been full of positive experiences, achievements, and special memories. I am grateful to have been part of such a wonderful class and look forward to seeing all the children continue to grow and succeed,

Miss Begum - KSI Class Teacher

This Half Term...

Week Commencing Mon 22nd June	Cultural Appreciation Week
Mon 22nd June	No Star Pupil Assembly
	Class Photo Day (Rec-Y6)
Tues 23rd June	Rec. Assembly
	Breakdance workshops Y1-Y6
Thurs 25th June	Yr. 5 Class Assembly
Fri 26th June	Cultural Appreciation Week Sharing Assembly - Parents Welcome
Tues 30th June	Sports Day EY+KSI 9:30-10:30
Thurs 2nd July	Yr. 4 Class Assembly
Tues 7th July	Sports Day KS2 9:30-11am
Wed 8th July	Yr. 3 Class Assembly
	Parent's Evening Drop in sessions
Thurs 9th July	Rockstars Concert 9:30am - Family and Friends Welcome
	Summer Disco
Fri 10th July	Transition Morning (Children meet their new teachers)
Mon 13th July	Shining Star Assembly - Parents Welcome
Tues 14th July	Prayer Morning - Parents Welcome
Wed 15th July	Year 6 Graduation
Thurs 16th July	End of Year Concert - Parents Welcome

Friday 17th July
Last Day of Term - 2pm finish

Class Photo Day is fast approaching.

THIS MONDAY
22nd June 2026
Rec - Yr. 6

We look forward to seeing you all smart and ready in your school uniform



NEW PRICE
coming soon

From September 2026 school meal prices are increasing to **£3.10** for children

St. Clement's
Church of England Primary Academy

Butlin Street, Nechells, Birmingham, B7 5NS
Phone: 0121-464-4652 E-mail: office@stclements.bdmatt.org.uk
Head Teacher: Miss Shryane Assistant Head Teacher: Mrs Kamali
Assistant Head Teacher: Mrs Wagenfuhrer

stclements.bdmatt.org.uk facebook.com/StClemNechells
x.com/StClem_Nechells instagram.com/stclem_nechells

#LearningforLifeAnchoredInChrist

Year 6 Baby Photos Needed

Parents of Year 6 please can you email 3 or 4 baby/younger photos of your child for our end of year graduation.

Please email them to
office@stclements.bdmatt.org.uk

Thanks



Cultural Appreciation Week Parent Workshops

EYFS - Thursday 25th (1:30pm - 2:30pm)

KS1 - Monday 22nd (10:45am - 11:45am)

Year 3 - Friday 26th (9am - 10am)

Year 4 - Friday 26th (11:15am - 12:15pm)

Year 5 - Wednesday 24th (2pm - 3pm)

Year 6 - Monday 22nd (2pm - 3:30pm)

We look forward to seeing you



Safeguarding: Bereavement, Grief and Loss

Bereavement, grief and loss can cause many different symptoms, and they affect people in different ways. There's no right or wrong way to feel.

As well as bereavement, there are other types of loss such as the end of a relationship or losing a job or home.

Some of the most common symptoms include:

- * shock and numbness – this is usually the first reaction to loss, and people often talk about "being in a daze"
- * overwhelming sadness, with lots of crying
- * tiredness or exhaustion
- * anger – towards the person you've lost or the reason for your loss
- * guilt – for example, guilt about feeling angry, about something you said or did not say, or not being able to stop your loved one dying

These feelings may not be there all the time and powerful feelings may appear unexpectedly.

It's not always easy to recognise when bereavement, grief or loss are the reason you're acting or feeling differently.

Try talking about your feelings to a friend, family member, health professional or counsellor – you could also contact a bereavement support organisation such as Cruse or call: 0808 808 1677.



Attendance & Punctuality

	Rec.	Yr. 1	Yr. 2	Yr. 3	Yr. 4	Yr. 5	Yr. 6
At.	98%	94%	93%	96%	96%	98%	95%
Pu.	4	8	5	14	6	3	13

Charity Spotlight

Cruse Bereavement Support

In 2024/25 Cruse provided over 71,000 support activities for bereaved people, with many thousands more visiting our sites or connected with us on social media.

We offer support through our website, national helpline, group, zoom, telephone or one-to-one in person support. We want to make sure everyone grieving gets the help they need in a way that works for them. We have a specially trained dedicated team of 4,000 bereavement volunteers.

www.cruse.org.uk

0808 808 1677



Football

On Tuesday our fabulous Year 5 and 6 Football Team played against, a very good, Nechells Primary Football Team. Our team was captained by Aaron.

Both teams played very well and were cheered on by staff, friends and family.

St. Clement's won the match 1-0. We are very proud of them, how they played as a team and their sportsmanship.

Well done St Clement's!

WATER SAFETY

On Wednesday the children took part in a water safety assembly. They were taught about how to stay safe around water in and outside the home.

The children learnt about the different flags they might see at the beach and the job of a lifeguard. They also learnt how to contact 999 to get help. Water safety is very important.

More information is attached to the newsletter, and you can scan the QR Code for further resources and information.



Left:
Symbol



Right:
How to sign



Happy



Top
twice



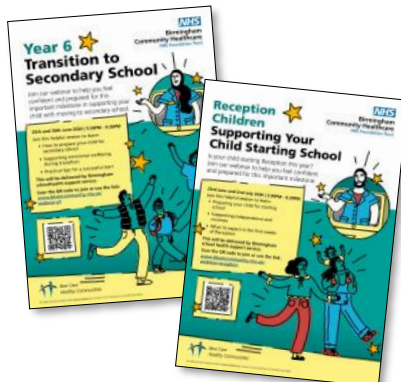
Fathers



Day

NHS Community Healthcare Team

Please see the information shared by the NHS attached to the newsletter. Information on supporting transition to Secondary School and being school ready for Reception.



School Sports Days

Tues 30th June

EY+KS1 9:30am-10:30am

Tues 7th July

KS2 9:30am - 11am

Please make sure children are wearing their PE kits on their sports day.



NEXT WEEK

Breakdancing
Tuesday 23rd June

Human dignity is the same for all human beings: when I trample on the dignity of another, I am trampling on my own.

Pope Francis

NURSERY PLACES

School Year 2026/27

If you or a friend has a child born between September 1st 2022 and August 31st 2023 then you can apply for a Nursery place for September. Please contact the office to arrange collecting an application form.

We're looking for a DJ...

...for our Summer Disco

If you know anyone that might be able to help, can you please share their contact details with the school office.

Our Disco will be held on Thursday 9th July between 3pm - 6pm



St. Clement's
Church of England Primary Academy

0121 464 4652

office@stclements.bdmats.org.uk

SUMMER DISCO

THURSDAY 9TH JULY

3PM-4PM **EY & KS1** (NUR, REC, Y1,2)

4:30PM-6PM **KS2** (Y3,4,5,6)

£2

The Summer Discos will be held on Thursday 9th July. There will be a refreshment stall where snacks, drinks and sweets can be purchased. Please make sure your child has money on the day.

The disco is open to children from Reception - Year 6. Tickets are £2 and can be purchased from the school office. Please see times below and purchase your ticket ASAP, our last few discos sold out!

3pm-4pm EY & KS1 (Nur., Rec., Y1,2)

Children will start the disco during school time and be ready to be picked up at 4pm. (children to bring clothes to change into at school)

Children not attending the disco to be picked up at 3:30pm as usual.

4:30pm-6pm KS2 (Y3,4,5,6)

Children will go home at 3:30pm as usual and then return to school for 4:30pm

*Please bring your ticket on the day/night of the disco.

**Entry to and from the disco will be from the Butlin Street gate.

ROCK STEADY Pupil Concert!

The lessons are happening, and the practice continues in preparation for our first Pupil RockSteady Concert!!!

Family and Friends of those taking part are welcome to join us - we can't wait to share the amazing school bands and their performances.

Thursday 9th July
at 9:30am

 **St. Clement's**
Church of England Primary Academy

